

TIPS earthVision® 13 - 64-bit Windows® Installation Guide

(64-bit Linux available upon request)

August 2021

KeyClient7.X or higher must be installed. Open Control Panel, view by large icons, look for KeyAccess. If missing or less than version 7, download and install k2client32 or 64 from:

<https://osmtips.sharefile.com/f/fob60842-aa6e-43a7-b70c-e3e3f34fbe2d>

Change server name to that in the License Information Sheet. Restart if asked.

Needed:

- **License Information Sheet** (attached to earthVision (EV) Distribution Letter)
- EV13 installer -- ev13_win64_31jan2023 obtained from:
<https://osmtips.sharefile.com/f/fo2ab7a7-1e02-48f0-8d2d-e44c2202ee09>

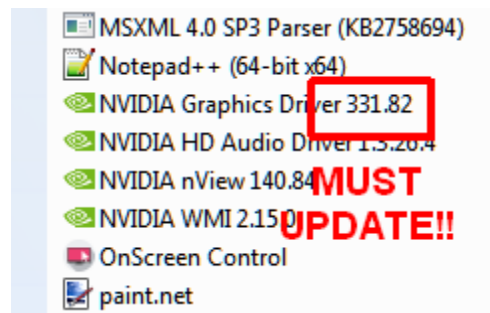
Optional:

- Python – typically gets installed with ESRI software. If not, get WinPython (winpython.github.io) or Anaconda 2.7+ or 3.6+ at the Anaconda [website](#).
- Perl - (<http://strawberryperl.com/>)

Typical Installation

Login with administrative rights:

- In Control Panel, find and uninstall* any previous versions.
- Stay in control Panel and check for any NVIDIA drive and version. If not at least 355.xx, update



at the [NVIDIA website](#). Version 375.xx+ is recommended.

- Follow instructions in **License Information Sheet** to enter System Variables.

Install EV13: Right click ev13_win64_31jan2023 setup.exe and run as administrator. Select all of the defaults; finish.

Restart computer

Test: Open EV Main Menu, select Visualization -> 3D Viewer. The firewall alert is one-time and harmless, click “cancel.” If the Viewer and file selection don’t open after a bit, there may be firewall issues. Contact us.

EV13 is now installed.

A few moments spent studying the User Guide Introduction will give a good overview of the program and interface.

Any issues or questions should be directed to: Kristin Brown
(kbrown2@osmre.gov) (303)-236-3410.

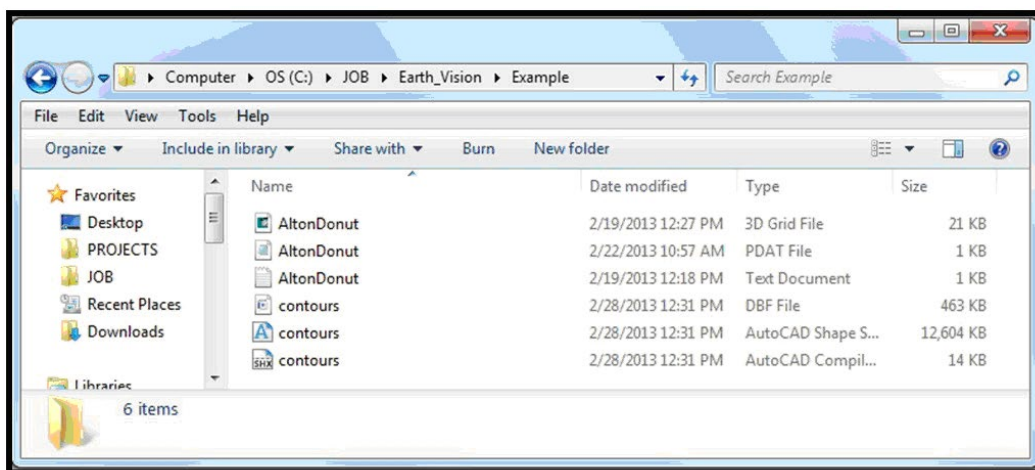
Periodically, revisit Sharefile for patches, updates, and new features.

Show ALL Files and Extensions

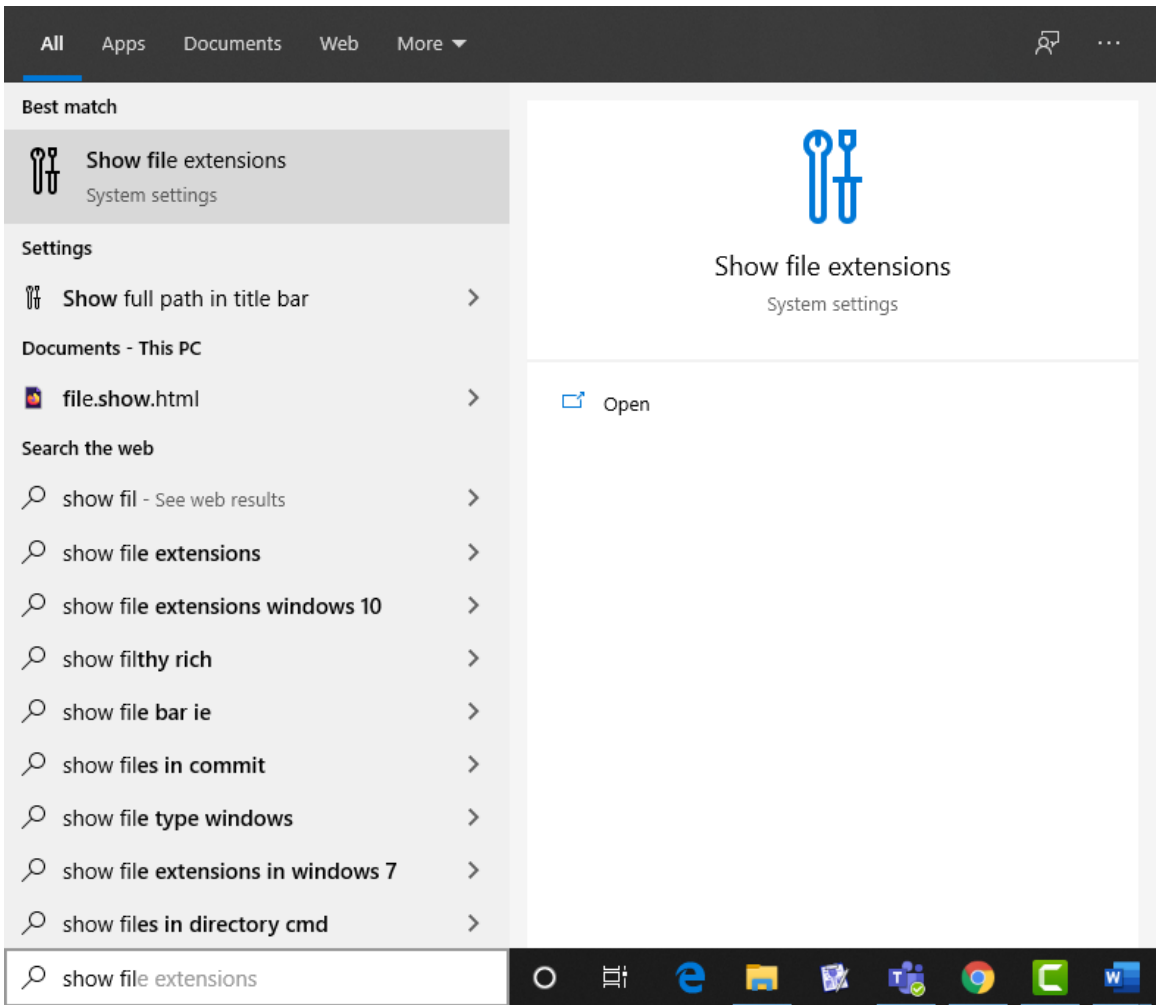
SHOW ALL FILES AND EXTENSIONS

File extensions are hidden by default in Windows. Because Windows’ “idea” of **Type** can’t be trusted, showing extensions helps you use the right files for all software.

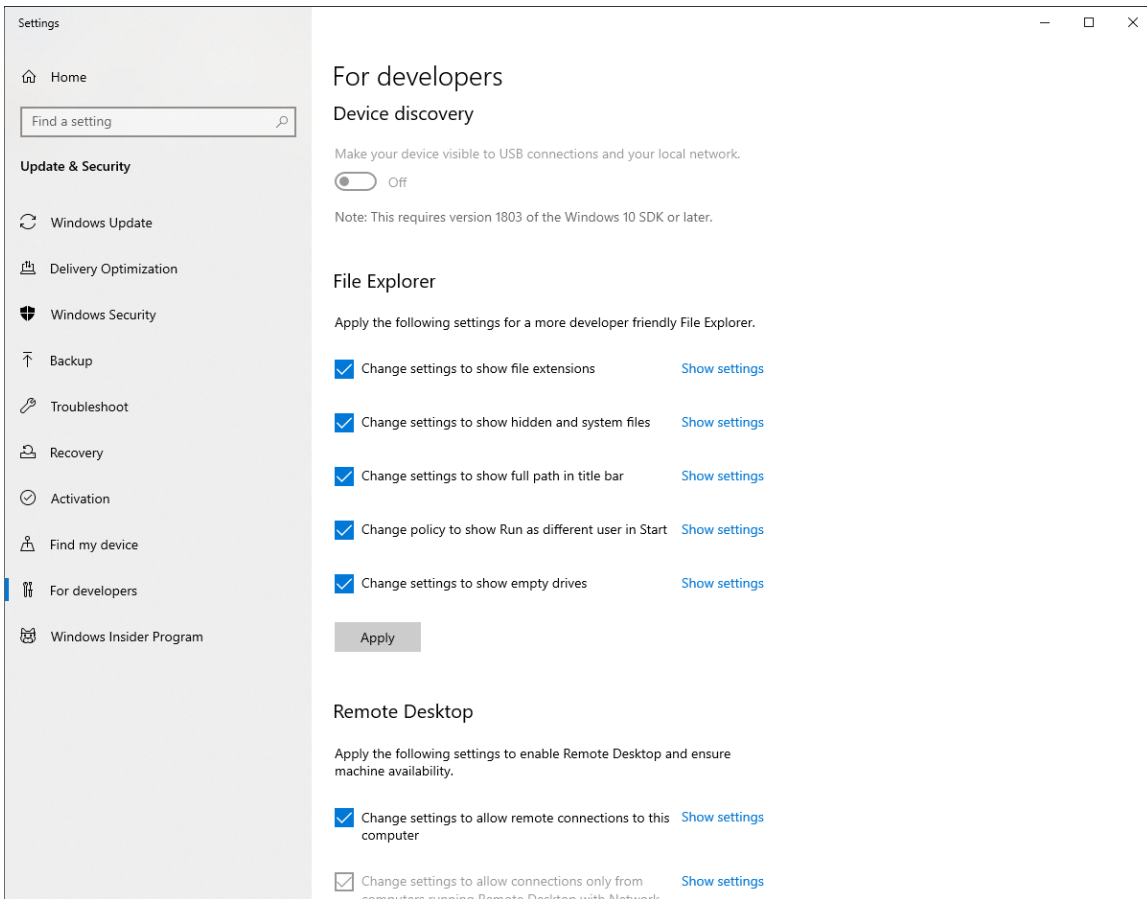
Example: A folder may have several files with the same name:



You can’t tell what these files are just from their names and “type” is often associated with the wrong program. Not only is this confusing but it’s easy to delete the wrong files. To show file extensions, in the search bar type Show File Extensions to get a window that looks like this:

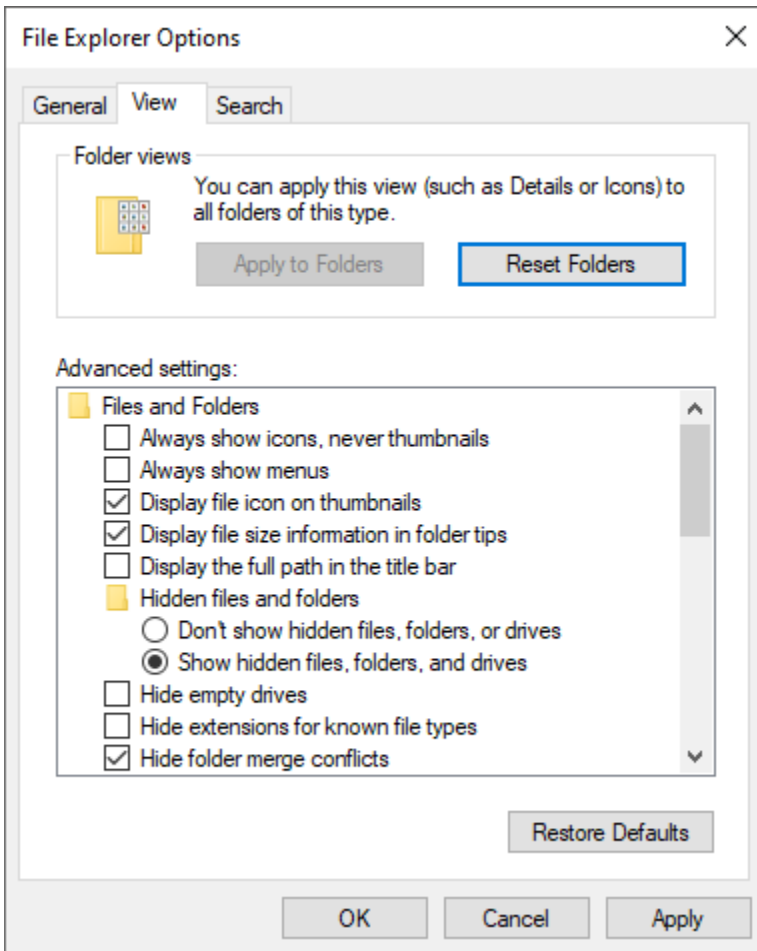


Click on Show file extensions.



Click on Show Settings.

Select the **View** tab and under **Advanced Settings**, check: **Show Hidden Files, Folders and Drives** then uncheck **Hide Empty Drives in the Computer folder** and **Hide extensions for known file types** and **Hide protected operating system files** (answer “yes” when Windows prompts).



Click **OK** and now you can see all extensions.